



EduKitchen - Recipes for Learning Presents

ASSESSMENTS IN EDUCATION

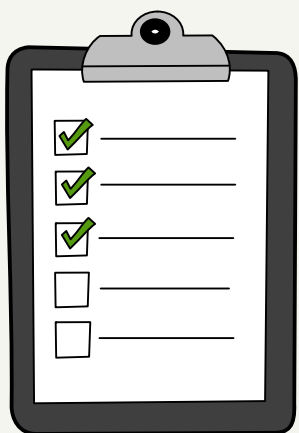
Assessments guide learning and are meant to help give students the encouragement they need to improve their level of understanding. Below are the different aspects of assessment in education.

TYPES OF ASSESSMENTS

In education, there are two main categories of assessments; formative and summative. Formative assessments are on-going assessments given to students to provide immediate feedback as to their understanding of the material, before the final or summative assessments are given.



IMPORTANCE OF FEEDBACK



Assessments guide learning because of the amount of feedback students receive as to how much they are understanding as they go through a lesson or unit or chapter. If students are not receiving adequate feedback it may impact negatively on their learning.

STUDENT/TEACHER RELATIONSHIPS

Building solid student/teacher relationships makes it easier for students to improve through the feedback they are given by their teachers and in understanding the purpose of the different types of assessments.



LANGUAGE SKILLS

The connection between assessments and language skills are improved when students understand how the language skills can be evaluated independently and together.

ONLINE ASSESSMENTS

The online learning environment is very different to the traditional classroom environment. Methods of assessments need to change. Teachers should rely more on bringing out individual creativity when teaching in the online environment. Instead of using closed-ended questions use more open-ended questions when conducting summative assessments.

